

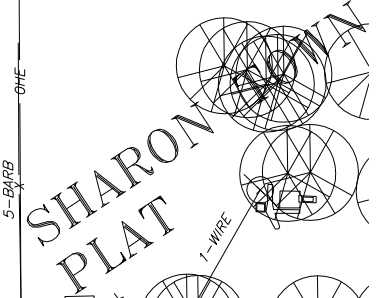
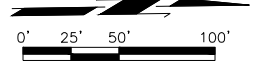
**SECTION 28
T-21-N, R-20-W**

**ALL EXISTING UTILITY LOCATIONS
ARE APPROXIMATE & SHALL BE
FIELD VERIFIED PRIOR TO
CONSTRUCTION**

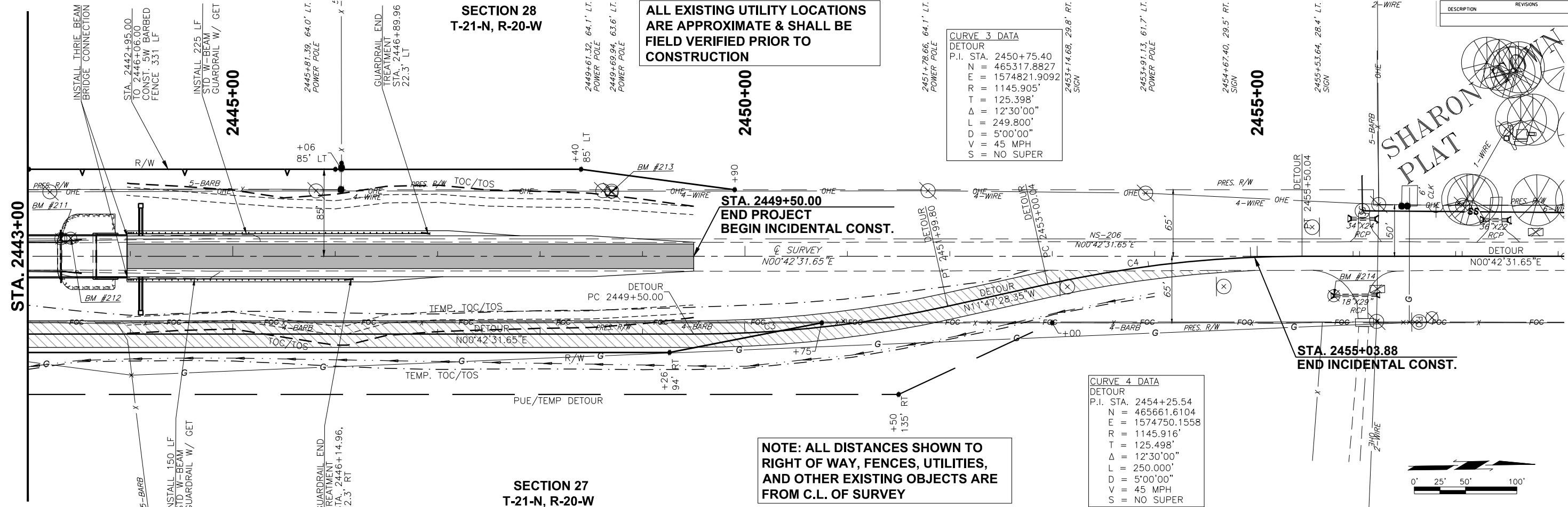
CURVE 3 DATA
DETOUR
P.I. STA. 2450+75.40
N = 465317.8827
E = 1574821.9092
R = 1145.905'
T = 125.398'
Δ = 12°30'00"
L = 249.800'
D = 5°00'00"
V = 45 MPH
S = NO SUPER

CURVE 4 DATA
DETOUR
P.I. STA. 2454+25.54
N = 465661.6104
E = 1574750.1558
R = 1145.916'
T = 125.498'
Δ = 12°30'00"
L = 250.000'
D = 5°00'00"
V = 45 MPH
S = NO SUPER

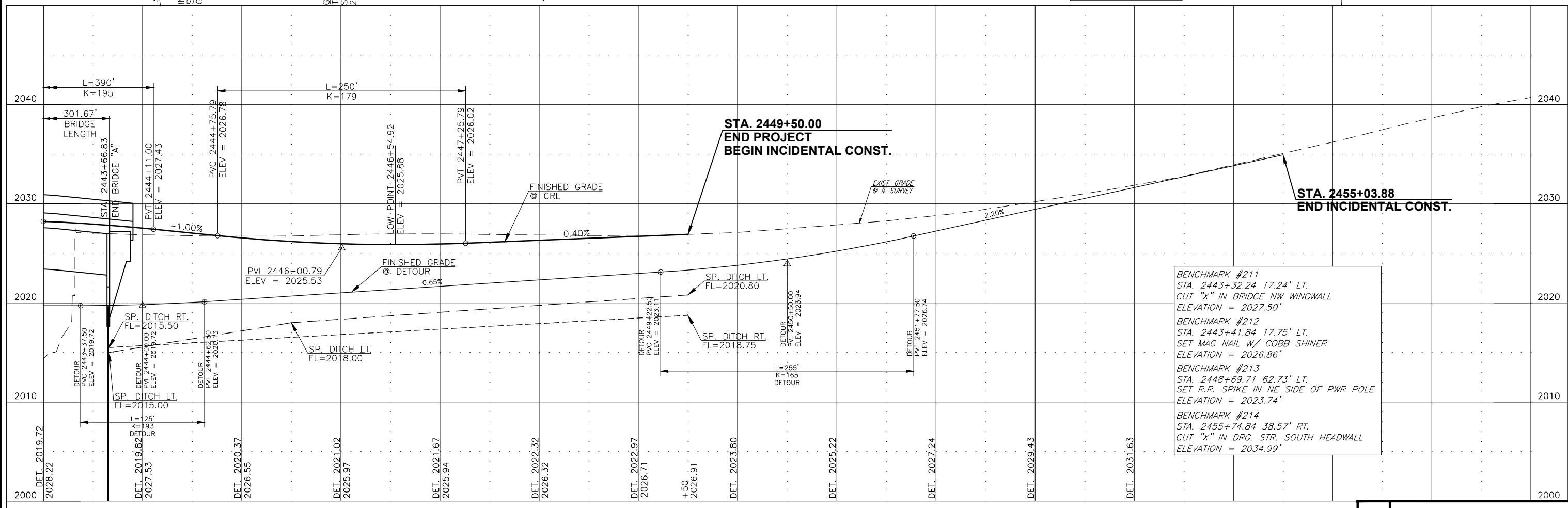
**NOTE: ALL DISTANCES SHOWN TO
RIGHT OF WAY, FENCES, UTILITIES,
AND OTHER EXISTING OBJECTS ARE
FROM C.L. OF SURVEY**



**SHARON
PLAT**



**SECTION 27
T-21-N, R-20-W**



BENCHMARK #211
STA. 2443+32.24 17.24' LT.
CUT "X" IN BRIDGE NW WINGWALL
ELEVATION = 2027.50'
BENCHMARK #212
STA. 2443+41.84 17.75' LT.
SET MAG NAIL W/ COBB SHINER
ELEVATION = 2026.86'
BENCHMARK #213
STA. 2448+69.71 62.73' LT.
SET R.R. SPIKE IN NE SIDE OF PWR POLE
ELEVATION = 2023.74'
BENCHMARK #214
STA. 2455+74.84 38.57' RT.
CUT "X" IN DRG. STR. SOUTH HEADWALL
ELEVATION = 2034.99'